

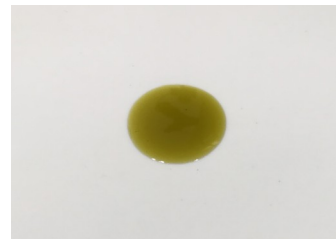
CERTIFICATE OF ANALYSIS No.: 2021-4594

CLIENT

Hempika d.o.o., Cankarjeva ulica 84
5000 Nova Gorica, Slovenija

SAMPLE

CBD Spray 1%



Sample condition: SUITABLE
Sample ID: 2118086
Sample type: Viscous liquid
Batch No.: DR01021127A

Work order: 2021-105124
Analysis ID: 2021_105
Method ID: PHL_RPC_12C
Method SOP: MET-002

Sample received: 07/05/2021
Start of analysis: 07/05/2021
End of analysis: 10/05/2021
Analyst: Aleksander Jefim

CANNABINOID PROFILE	Concentration [% w/w]	Expanded uncertainty [% w/w]	Graphic presentation of relative cannabinoid concentration
CBDV - Cannabidivarin	0.108	0.020	
CBDA - Cannabidiolic acid	0.260	0.044	
CBGA - Cannabigerolic acid	< LOQ	n/a	
CBG - Cannabigerol	< LOQ	n/a	
CBD - Cannabidiol	0.767	0.077	
THCV - Tetrahydrocannabivarin	< LOQ	n/a	
CBN - Cannabinol	< LOQ	n/a	
CBC - Cannabichromene	< LOQ	n/a	
THC - Δ-9-Tetrahydrocannabinol	< LOQ	n/a	
THCA - Δ-9-Tetrahydrocannabinolic acid	< LOQ	n/a	
8-THC - Δ-8-Tetrahydrocannabinol *	< LOQ	n/a	
CBL - Cannabicyclol *	< LOQ	n/a	

The results marked by * relate to non-accredited activity.

Units and abbreviations: % w/w = weight percent, < LOQ = below the limit of quantitation (0.03 % w/w), ND = not detected, n/a = not available.

The results given herein apply only to the sample as received. **Expanded Uncertainty** was calculated using coverage factor $k = 2$, corresponding to a double standard uncertainty and characterizes the interval value in which it is possible to expect the real value with a probability of 95%. This is stated according to the ISO/IEC Guide 98-3.

Total or partial reproduction of this document is not allowed without the permit from PharmaHemp d.o.o. The document does not substitute any other legal document.

Date issued:

10/05/2021

Approved by:

mag. Marko Dragan
Analytical Laboratory Manager

Authorized by:

dr. Boštjan Jančar
Chief Technology Officer

End of Certificate